

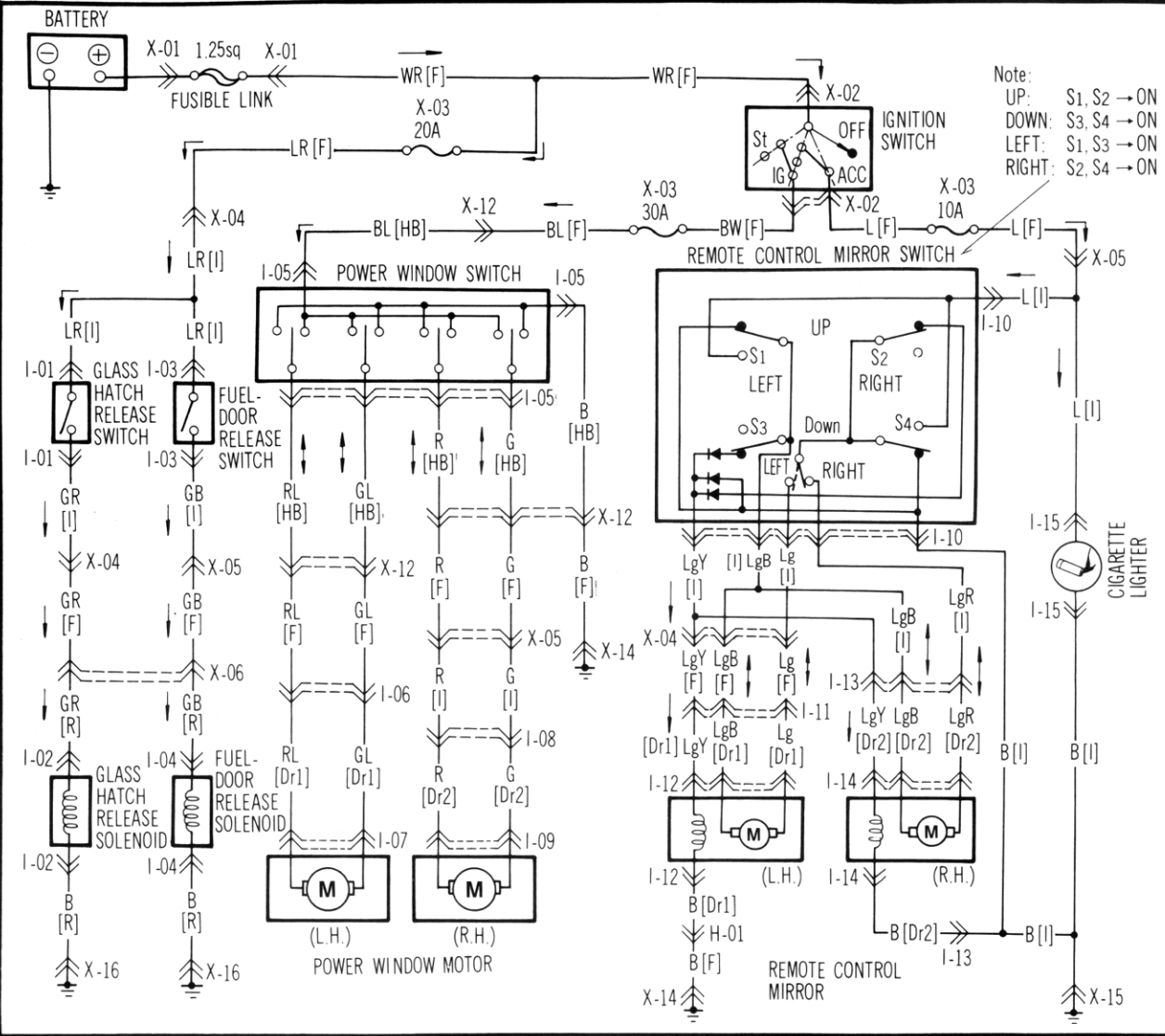
GLASS HATCH RELEASE SOLENOID

FUEL-DOOR RELEASE SOLENOID

POWER WINDOW

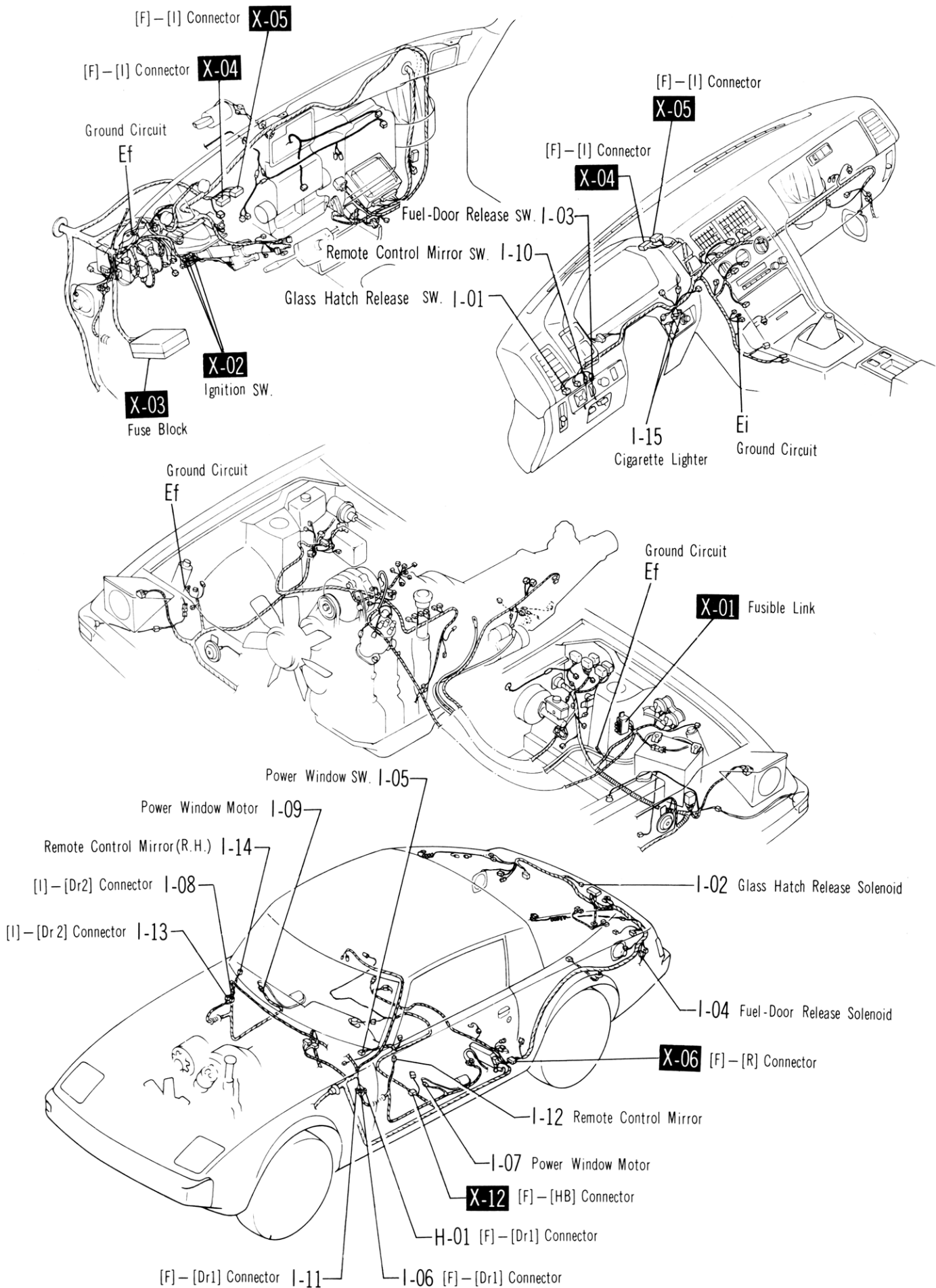
REMOTE CONTROL MIRROR

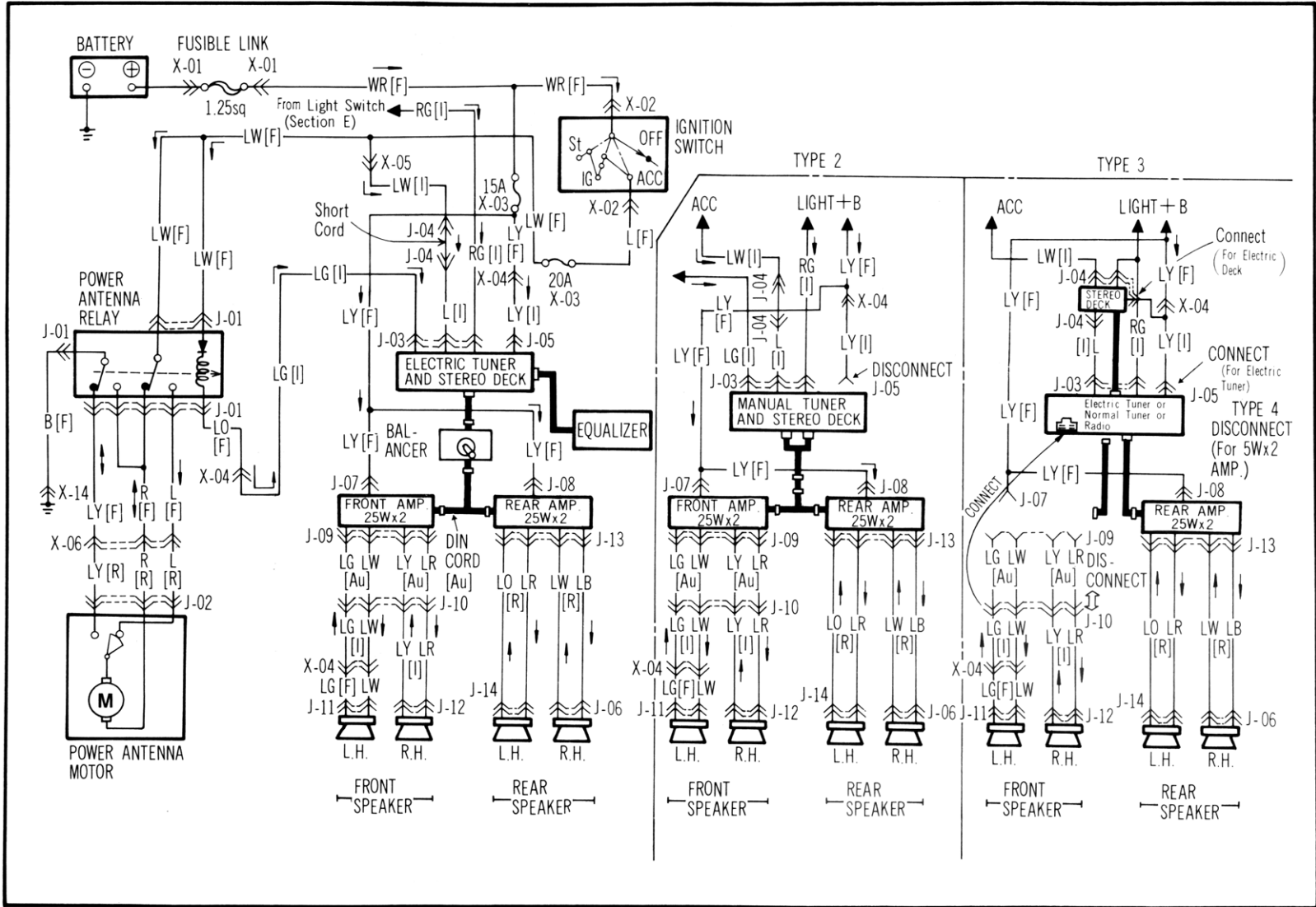
CIGARETTE LIGHTER



<p>I-01 Glass Hatch Release Switch [I]</p>	<p>I-02 Glass Hatch Release Solenoid [R]</p>	<p>I-03 Fuel-Door Release Switch [I]</p>	<p>I-04 Fuel-Door Release Solenoid [R]</p>
<p>I-05 Power Window Switch [HB]</p>	<p>I-06 Connector Between Front And No.1 Door Harness</p>	<p>I-07 Power Window Motor (L.H.) [Dr1]</p>	<p>I-08 Connector Between Instrument Panel And No.2 Door Harness</p>
<p>I-09 Power Window Motor (R.H.) [Dr2]</p>	<p>I-10 Remote Control Mirror Switch [I]</p>	<p>I-11 Connector Between Front And No.1 Door Harness</p>	<p>I-12 Remote Control Mirror (L.H.) [Dr1]</p>
<p>I-13 Connector Between Instrument Panel And No.2 Door Harness</p>	<p>I-14 Remote Control Mirror (R.H.) [Dr2]</p>	<p>I-15 Cigarette Lighter [I]</p>	

Note: ✕...Not Used





J-01 Power Antenna Relay [F] 	J-02 Power Antenna Motor [R] 	J-03 Tuner & Stereo Deck [I] 	J-04 Stereo Deck [I] (For Type 3, 4) 	J-05 Tuner & Stereo Deck [I]
J-06 Rear Speaker Cord [R] 	J-07 Front Amp. [F] 	J-08 Rear Amp. [F] 	J-09 Speaker Cord [Au] 	J-10 Connector Between Instrument Panel [I] And Audio Harness [Au]
J-11 Front Speaker (L.H.) [F] 	J-12 Front Speaker (R.H.) [I] 	J-13 Rear Speaker Cord [R] 	J-14 Rear Speaker (L.H.) [R] 	

Note: ✕ ... Not Used