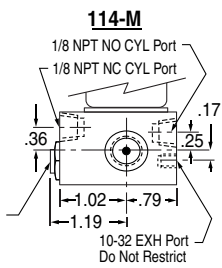
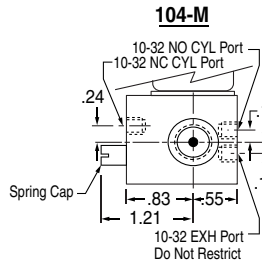
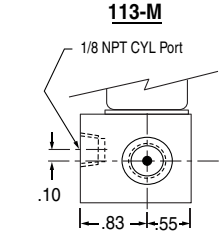
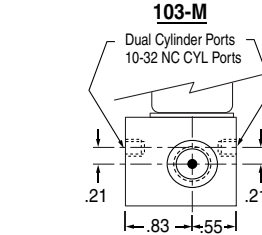
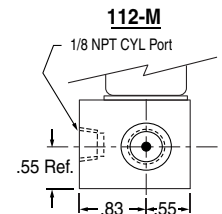
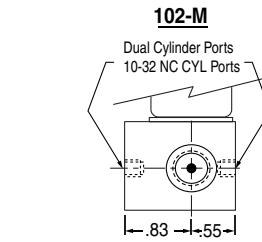
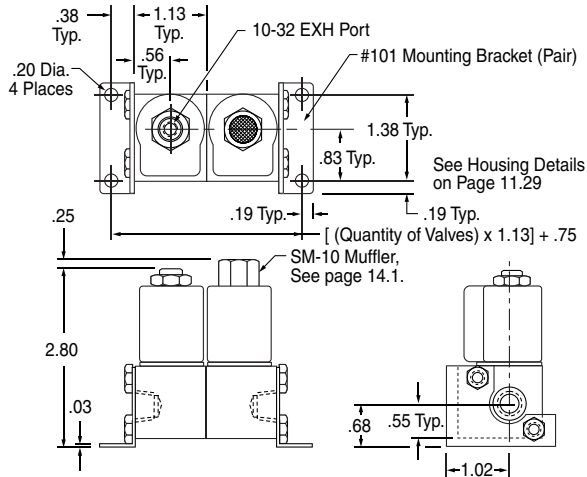


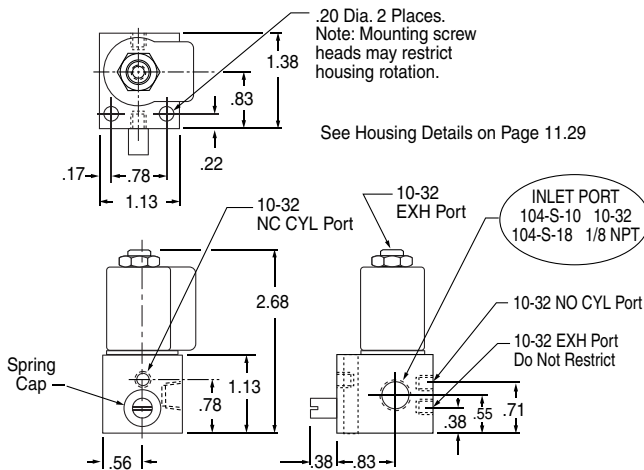
MODELS 102-M, 103-M, 104-M, 112-M, 113-M & 114-M

Supply pressure can be connected to either or both ends of the stack. Due to the fact that the supply pressure port on all "M" valve bodies is tapped on both sides, the pressure manifold can be plugged at any point within the stack. This allows you to supply the stack with two different pressures or media, one from each end.

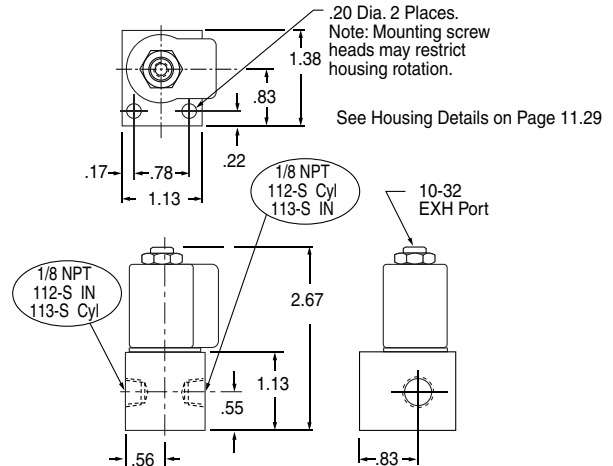
For more than two inputs a port block can be provided in midstack. Spacers can be included for applications requiring the larger EXPLOSION PROOF operator. Contact Fabco-Air with your specific requirements.



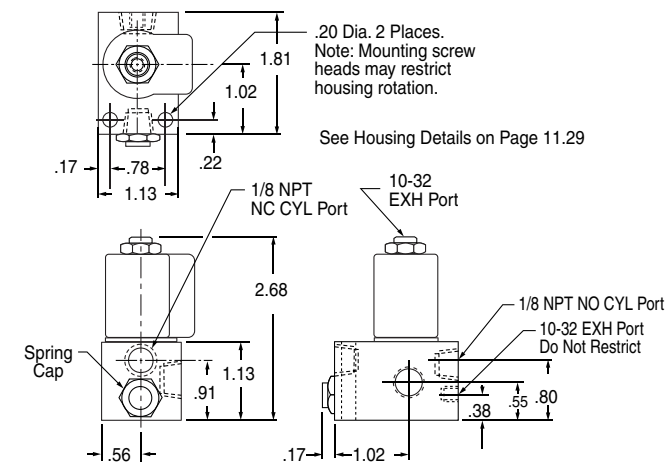
MODEL 104-S-10 (10-32 Inlet Port) MODEL 104-S-18 (1/8 NPT Inlet Port)



MODEL 112-S (2-Way), 113-S (3-Way)



MODEL 114-S



MODEL 102-SM (2-Way), 103-SM (3-Way)

