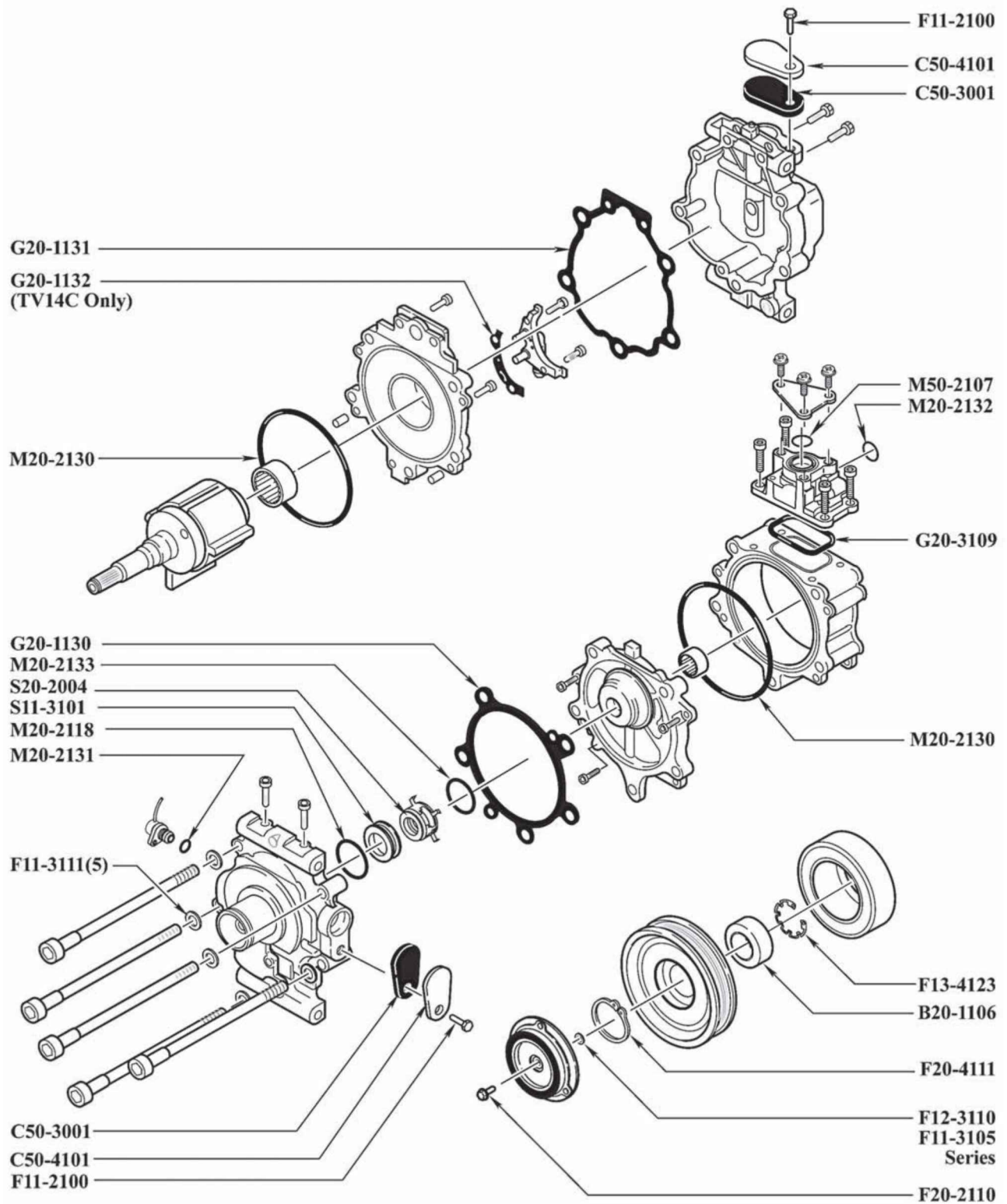


DENSO

TV12C(R12), TV14C



DENSO

TV12C(R12), TV14C

O-Rings	R134a and R-12 Compatible	Green HNBR	Black Nitrile
Adapter O-Ring		M20-2115	M20-1015
Carbon Shaft Seal O-Ring		M20-2133	
Case O-Ring		M20-2130	
Sensor O-Ring		M20-2131	
Shaft Seal Seat O-Ring		M20-2118	M20-1018
Temperature Switch Block O-Ring		M20-2132	M20-1032
Temperature Switch Dust Shield O-Ring		M50-2107	

Bearings

Clutch Bearing (30mm x 52mm x 22mm) **B20-1106**

Chemicals

Ultra PAG Oil 100 - 6pk, 8 oz Bottle **MT3013**

Ultra PAG Oil 100 - 6pk, Quart Bottle **MT3019**

Ultra PAG Oil 100 - Drum (52 gal) **A10-6164**

Fasteners

Bolt - Shaft **F20-2110**

Bolt - Shipping Plate **F11-2100**

Helical Insert - Rear Head / Shipping Plate (8-1.25 x 12mm) **F10-6211**

Retaining Ring - Clutch Coil **F13-4123**

Retaining Ring - Pulley **F12-4110**

Retaining Ring - Pulley **F20-4111**

Shim - Clutch (0.20mm) **F11-3105**

Shim - Clutch (0.20mm) **F11-3115**

Shim - Clutch (0.38mm) **F12-3110**

Washer - Head Bolt **F11-3111**

Clutch Installation Kit **K20-5107**



Includes: Coil Retaining Ring (1), Pulley Retaining Ring (1), Shaft Bolt (1), Shim (0.20mm) (1), Shim (0.38mm) (1), Shim (0.51mm) (1).

Gaskets

Gasket - Front Head Fiber **G20-1130**

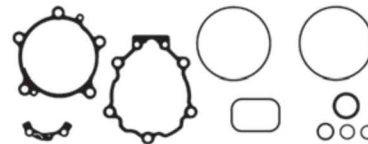
Gasket - Rear Head Fiber **G20-1131**

Gasket - Rotor Pressure Bypass (TV14C Only) Fiber **G20-1132**

Gasket - High Temperature Sensor Manifold Green HNBR **G20-3109**

Gaskets

Gasket Kit (Fiber) Green HNBR **K20-2150**



Includes: Gaskets: Front Head(1), Rear Head(1), Rotor Pressure Bypass(TV14C)(1), Hi Temp Sensor Manifold(1); O-Rings: Metal Seat(1), Case(2), Sensor(1), Hi Temp Block(1), Carbon Shaft Seal(1).

Shaft Seals

Carbon Ring Nitrile **S20-2003**

Carbon Shaft Seal Nitrile **S20-2004**

Metal Shaft Seal Seat **S11-3101**

Carbon Ring Kit Green HNBR **K20-3156**



Includes: Carbon Ring (1), Carbon Shaft Seal O-Ring (1).

Shipping Closures

Shipping Cap - Nose Protector **C20-1000**

Shipping Pad (Use with C50-4101) **C50-3001**

Shipping Plate (Use with C50-3001) **C50-4101**

Shipping Plate (Use with C95-3004 & C95-3006) **C95-4001**

Shipping Plug (Discharge) (Use with C95-4001) **C95-3004**

Shipping Plug (Suction) (Use with C95-4001) **C95-3006**

Tools

Helical Insert Drill for 8-1.25mm Inserts **T10-6053**

Helical Insert Tap 8-1.25mm **T10-6254**

Helical Insert Tool 8-1.25mm - Bolt Style **T10-6554**

Shaft Seal Protector **T45-1002**

Shaft Seal Protector, Adjustable **T95-1227**