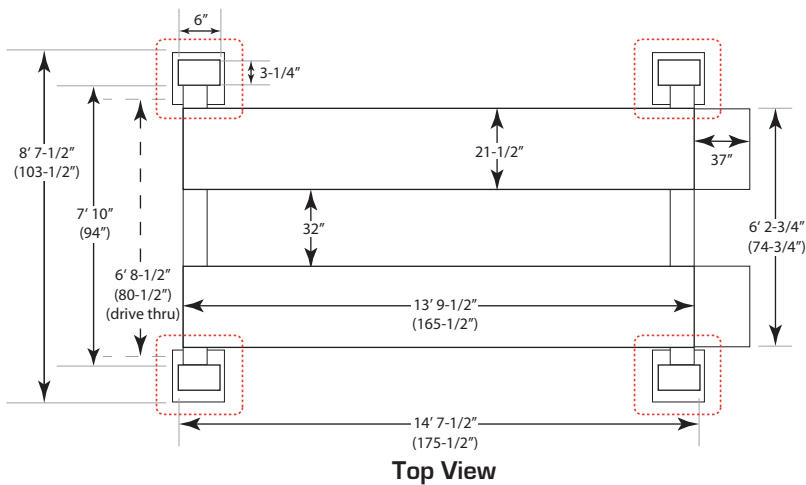


Direct Lift Pro Park 8 S 4-Post Lift Installation and Schematics

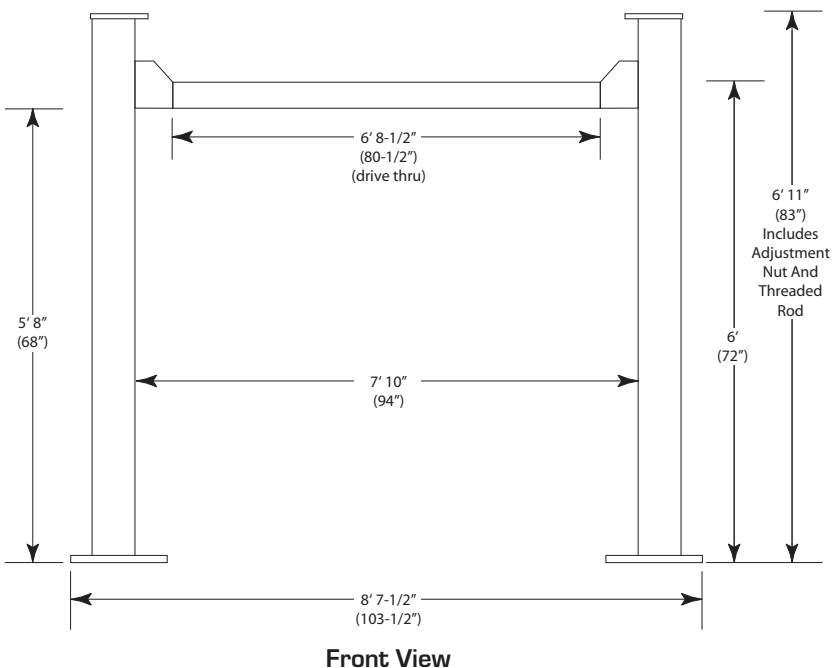
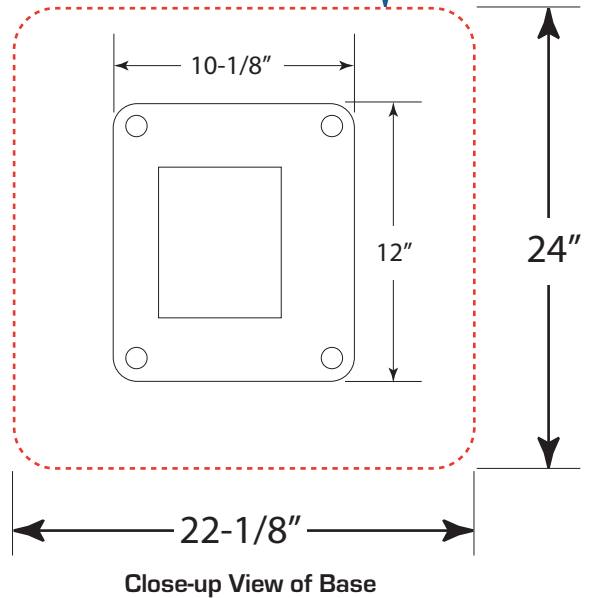
Installation Requirements

- 4" Concrete **(Although this lift does not need to be mounted to the floor)**
- 3000 PSI
- There should be at least 6" clearance between sub-floor heating and plumbing and each lift post base.

CAUTION! Installation instructions and/or drawings are for reference only. Consult your particular garage floor plan before attempting to install a lift to avoid damage to heating, plumbing, electrical, or other systems. Drawings are not to scale. Greg Smith Equipment Sales is not responsible for damage resulting from installation of lifts.



Leave at least 6" clearance between the post base and any sub-floor heating or plumbing.



This lift does not need to be anchored to the floor. However, if you choose to anchor this lift to the floor, follow these guidelines: For a 10-1/8" x 12" base, there should be no plumbing, heating, electrical, or other components in the floor in a 22-1/8" x 24" area at the base of the lift.